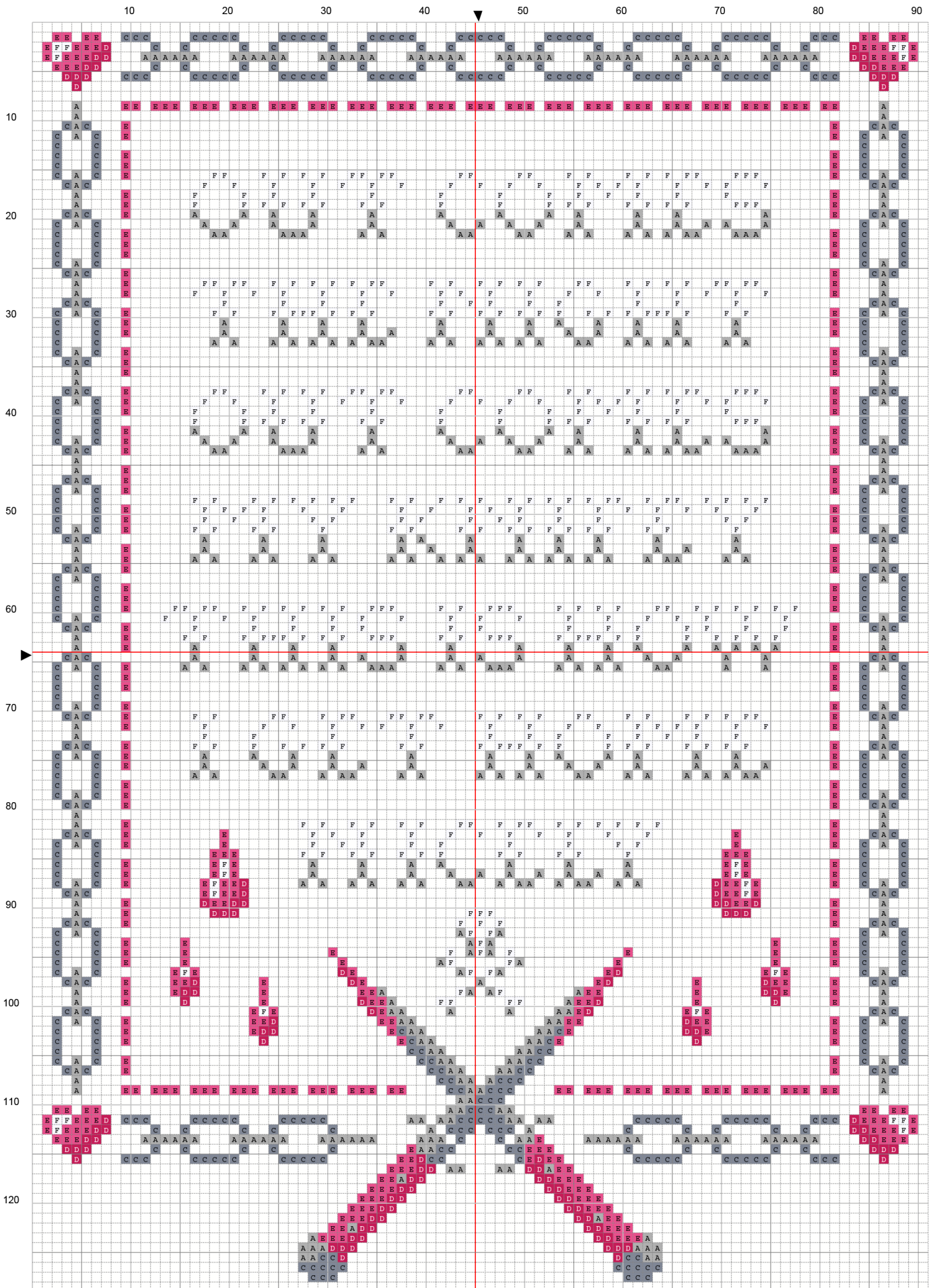


Night Spirit Studio "Knifey"



Night Spirit Studio

"Knifey"



Night Spirit Studio

"Knifey"



Night Spirit Studio

"Knifey"

**THIS PATTERN USES LYRICS FROM THE SONG 'KNIFEY' BY
AMYL AND THE SNIFFERS**

ALL I EVER WANTED WAS TO WALK BY THE PARK
ALL I EVER WANTED WAS TO WALK BY THE RIVER, SEE THE
STARS
PLEASE, STOP FUCKING ME UP
OUT COMES THE NIGHT, OUT COMES MY KNIFEY
THIS IS HOW I GET HOME NICELY
I TURN AROUND AND BACKTRACK
BECAUSE I AIN'T THAT TOUGH
BUT YOU STILL FUCK ME UP

ALL I EVER WANTED WAS TO WALK IN THE PARK
ALL I EVER WANTED WAS TO WALK BY THE RIVER, SEE THE
STARS
PLEASE, STOP FUCKING ME UP

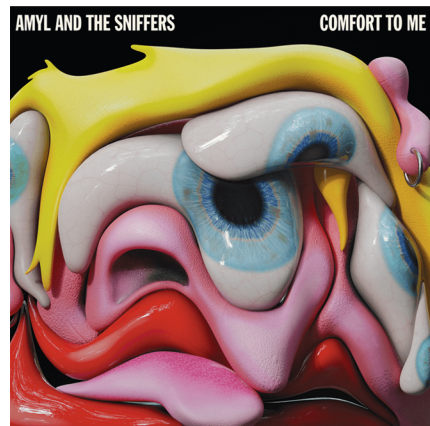
NOTHING MORE IMPORTANT TO ME THAN JUST LIVING
I'D RATHER BE ALIVE AND WELL THAN LOCK D UP IN PRISON
I TURN AROUND AND BACKTRACK
BECAUSE I AIN'T THAT TOUGH
I'M A SICK, DEMNTED MONSTER
WITH MY HANDS AROUND YOUR THROAT
MY KNEES INSIDE OF YOUR GUTS
I TURN AROUND AND BACKTRACK
BECAUSE I AIN'T THAT TOUGH
BUT YOU STILL FUCK ME UP

[CHORUS]

ALL I EVER WANTED WAS TO WALK BY THE PARK
ALL I EVER WANTED WAS TO WALK BY THE RIVER, SEE THE
STARS
PLEASE, STOP FUCKING ME UP
OUT COMES THE NIGHT, OUT COMES MY KNIFEY
THIS IS HOW WE GET HOME NICELY
PLEASE, 'CAUSE YOU'VE BEEN FUCKING WITH US
AND NOW WE'RE FUCKING TOUGH

ALL I EVER WANTED WAS TO WALK BY THE PARK
ALL I EVER WANTED WAS TO WALK BY THE RIVER AFTER
DARK
PLEASE, BECAUSE I AIN'T THAT TOUGH
OUT COMES THE NIGHT, OUT COMES MY KNIFEY
THIS IS HOW I GET HOME NIGHTLY
I TURN AROUND AND BACKTRACK
BECAUSE I AIN'T THAT TOUGH
BUT YOU STILL FUCK WITH US

ALL I EVER WANTED WAS TO WALK BY THE PARK
ALL I EVER WANTED WAS TO WALK BY THE RIVER, SEE THE
STARS
PLEASE, STOP FUCKING WITH US
OUT COMES THE NIGHT, OUT COMES MY KNIFEY
THIS IS HOW I GET HOME NICELY
PLEASE, 'CAUSE YOU'VE BEEN FUCKING WITH US
AND NOW WE'LL FUCK YOU UP
OUT COMES THE NIGHT, OUT COMES MY KNIFEY
THIS IS HOW WE GET HOME NICELY
PLEASE, 'CAUSE YOU'VE BEEN FUCKING WITH US
'CAUSE WE'RE JUST NOT THAT TOUGH



14 stitch/in 89x127 Stitches (16.1 x 23.0 cm) (6.4 x 9.1 in.)
16 stitch/in 89x127 Stitches (14.1 x 20.2 cm) (5.6 x 7.9 in.)
18 stitch/in 89x127 Stitches (12.6 x 17.9 cm) (4.9 x 7.1 in.)

Will fit well in an 8x10 inch frame.

	Number	Strands	Length	Stitches
F	DMC B5200	2	0.4 Skeins	573
A	DMC 3	2	0.5 Skeins	639
C	DMC 318	2	0.4 Skeins	566
D	DMC 601	2	0.1 Skeins	118
E	DMC 603	2	0.3 Skeins	451