

◆ THE RAVEN ◆







**THE RAVEN BY EDGAR ALLAN POE  
ILLUSTRATED BY GUSTAVE DORÉ  
CHARTED BY NIGHT SPIRIT STUDIO**



010

020

030

040

050

060

070

080

010

020

030

040

050

060

070

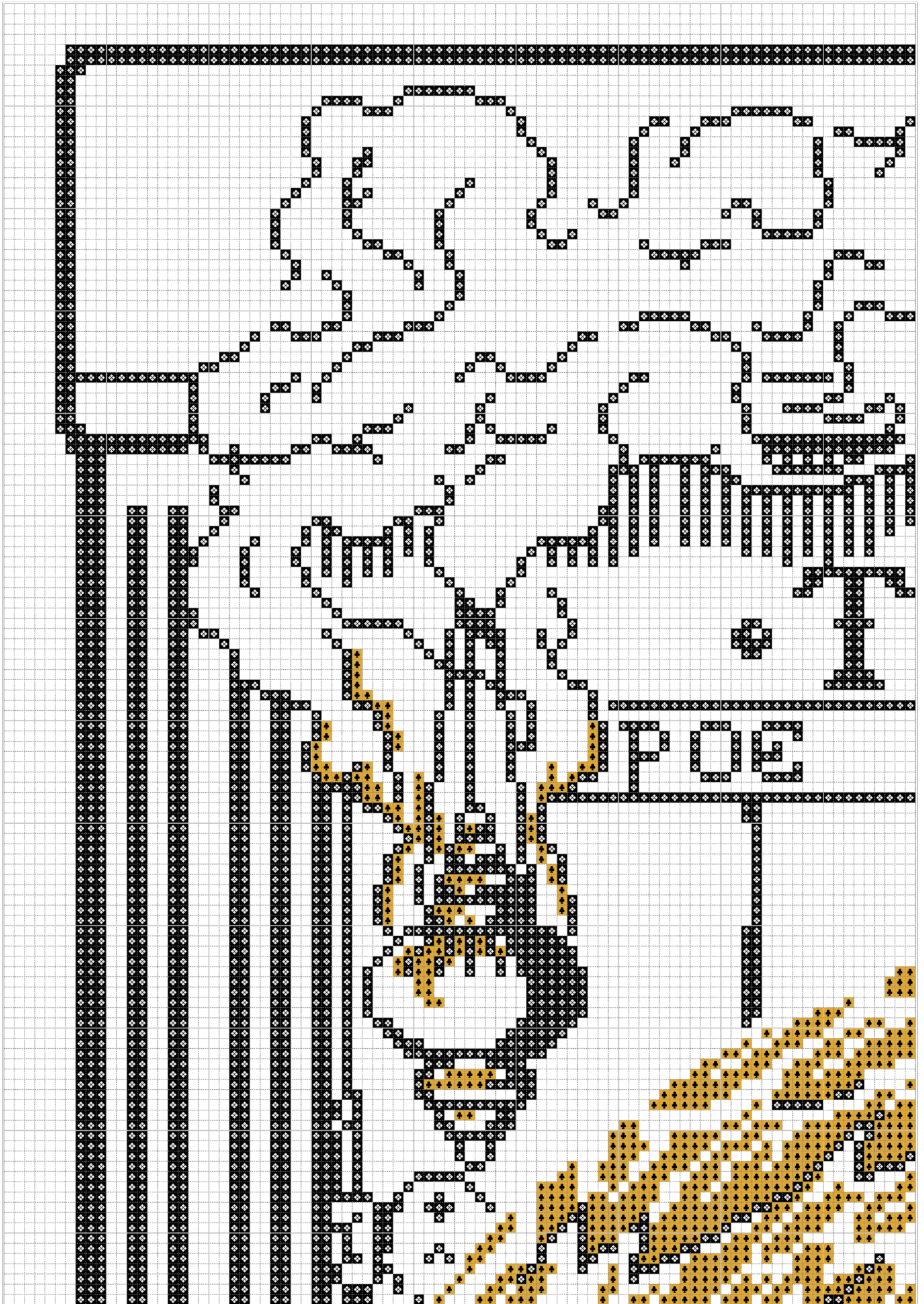
080

090

100

110

120



**THE RAVEN BY EDGAR ALLAN POE  
ILLUSTRATED BY GUSTAVE DORÉ  
CHARTED BY NIGHT SPIRIT STUDIO**





**THE RAVEN BY EDGAR ALLAN POE  
ILLUSTRATED BY GUSTAVE DORÉ  
CHARTED BY NIGHT SPIRIT STUDIO**



010

020

030

040

050

060

070

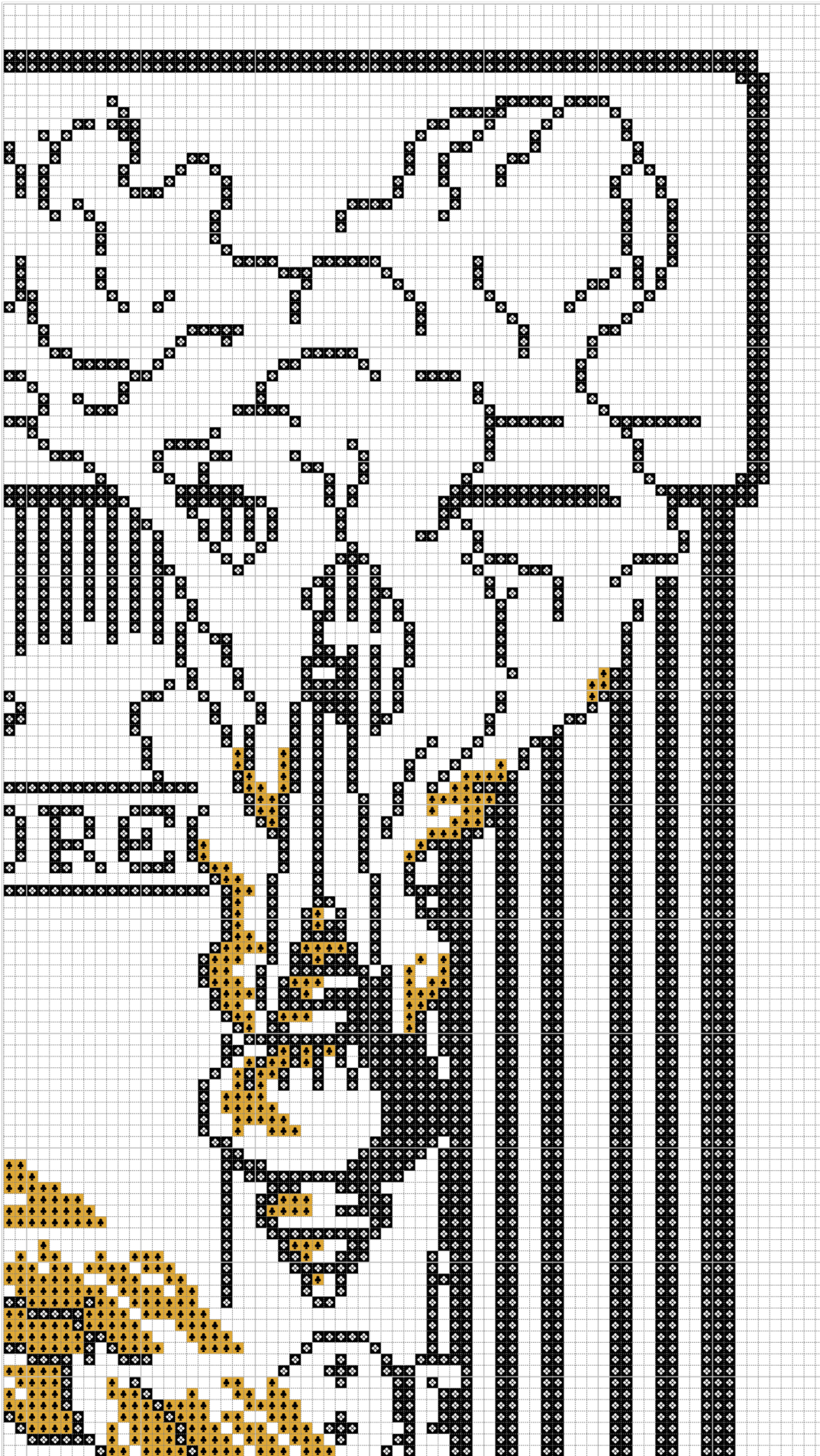
080

090

100

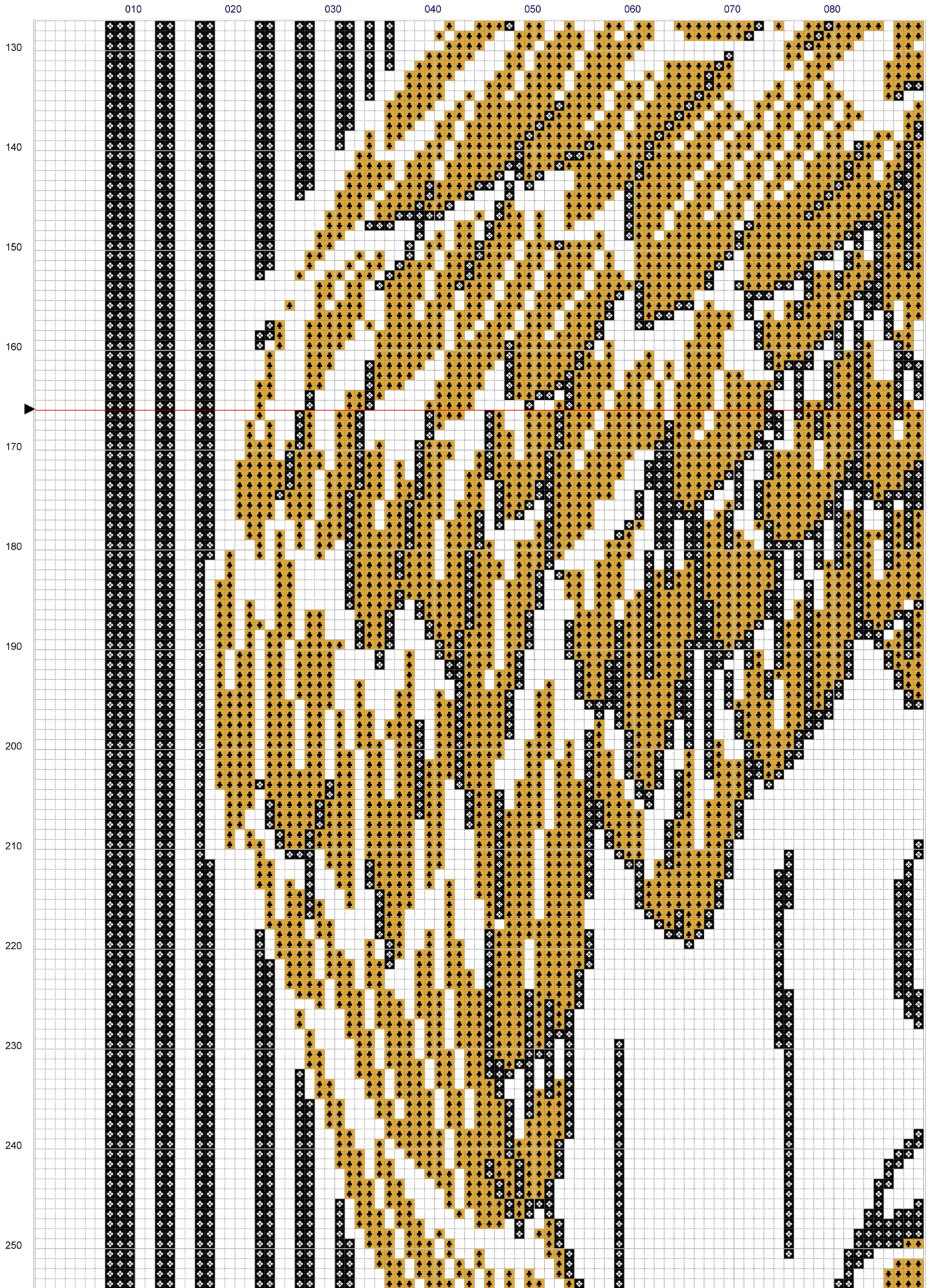
110

120



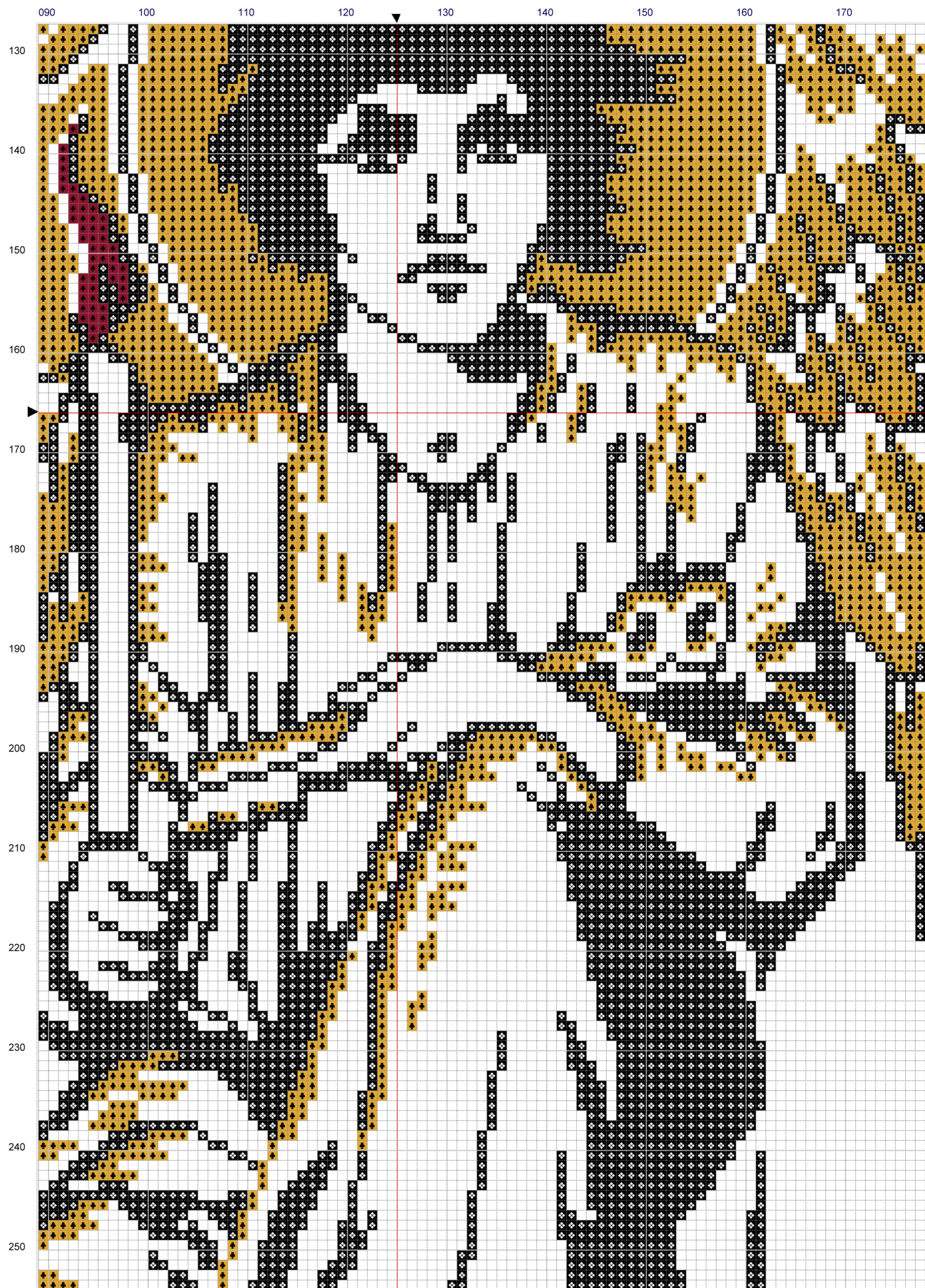
**THE RAVEN BY EDGAR ALLAN POE  
ILLUSTRATED BY GUSTAVE DORÉ  
CHARTED BY NIGHT SPIRIT STUDIO**





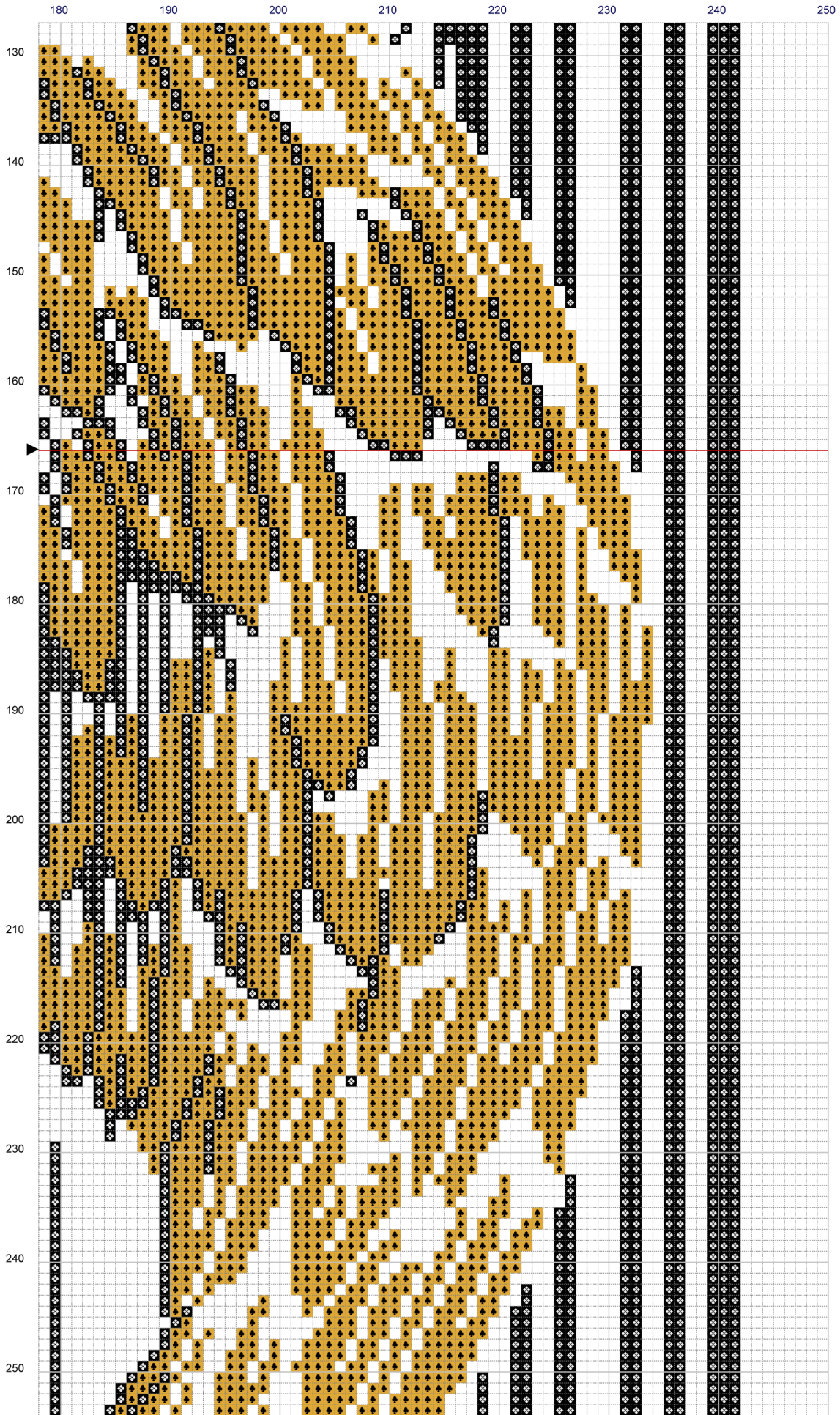
**THE RAVEN BY EDGAR ALLAN POE  
ILLUSTRATED BY GUSTAVE DORÉ  
CHARTED BY NIGHT SPIRIT STUDIO**





**THE RAVEN BY EDGAR ALLAN POE  
ILLUSTRATED BY GUSTAVE DORÉ  
CHARTED BY NIGHT SPIRIT STUDIO**





**THE RAVEN BY EDGAR ALLAN POE  
ILLUSTRATED BY GUSTAVE DORÉ  
CHARTED BY NIGHT SPIRIT STUDIO**





**THE RAVEN BY EDGAR ALLAN POE  
ILLUSTRATED BY GUSTAVE DORÉ  
CHARTED BY NIGHT SPIRIT STUDIO**





**THE RAVEN BY EDGAR ALLAN POE  
ILLUSTRATED BY GUSTAVE DORÉ  
CHARTED BY NIGHT SPIRIT STUDIO**





**THE RAVEN BY EDGAR ALLAN POE  
ILLUSTRATED BY GUSTAVE DORÉ  
CHARTED BY NIGHT SPIRIT STUDIO**



## ◆ COLOR KEY ◆

	Number	Name:	Strands	Length	Stitches
◆	DMC 310	Black	2	387.89 yd.	19723
♣	DMC 3821	Straw	2	268.53 yd.	13654
↑	DMC 816	Garnet	2	0.98 yd.	50

## ◆ INFORMATION ◆

**SIZE: 25OX332 STITCHES**

**FABRIC COLOR: DARK DUSTY GRAY/GREEN/BROWN**

**(SEE ORIGINAL BOOK COVER BELOW FOR IDEAS)**

**SIZE ON 14 COUNT:**

**17-3/4 INCHES (45.4CM) WIDE X 23-3/4 INCHES (60.2CM) HIGH**

**SIZE ON 16 COUNT:**

**15-3/4 INCHES (39.7CM) WIDE X 20-3/4 INCHES (52.7CM) HIGH**

**SIZE ON 18 COUNT:**

**13-3/4 INCHES (35.3CM) WIDE X 18-1/2 INCHES (46.8CM) HIGH**

**SIZE ON 28 COUNT (OVER ONE):**

**9 INCHES (22.7CM) WIDE X 11-3/4 INCHES (30.1CM) HIGH**

**SIZE ON 32 COUNT (OVER ONE):**

**7-3/4 INCHES (19.8CM) WIDE X 10-1/2 INCHES (26.4CM) HIGH**

**THESE DO NOT INCLUDE FABRIC MARGINS.**

**NUMBER OF STITCHES: 33,427**



**THIS PATTERN IS A RECREATION OF EDGAR ALLAN POE'S 'THE RAVEN' ILLUSTRATED BY GUSTAVE DORÉ, AND PUBLISHED IN 1884.**

**FEEL FREE TO CONTACT ME WITH ANY COMMENTS OR QUESTIONS ABOUT THIS PATTERN:  
INFO@NIGHTSPIRITSTUDIO.COM**